



PRODUCT SPECIFICATION SHEET

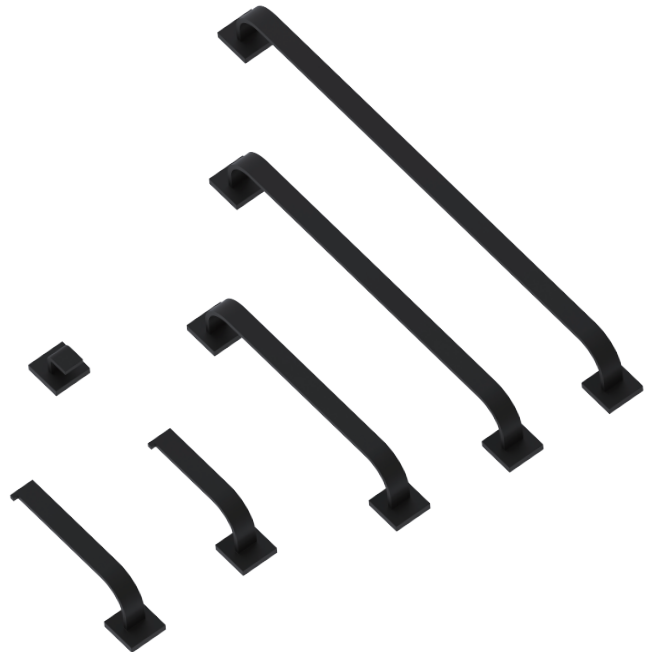
# PORTLAND SERIES

## MATTE BLACK (MB)

**MATERIAL:** ZINC  
STAINLESS STEEL 304

**KEY FEATURES:** MODERN DESIGN  
ZINC+STEEL COMPOSITION  
CAST BACKINGS  
WALL MOUNTED

**AVAILABLE FINISHES:**  POLISHED CHROME (PC)  
 MATTE BLACK (MB)



Product Code	Name	Finishes	Sizes (mm)			Sizes (Inche)		
			Length	Width	Height	Length	Width	Height
PDX-TB12	PDX-12 Towel Bar	PC, MB	352	47	69	13 7/8	1 7/8	2 5/8
PDX-TB18	PDX-18 Towel Bar	PC, MB	504	47	69	19 7/8	1 7/8	2 5/8
PDX-TB24	PDX-24 Towel Bar	PC, MB	657	47	69	25 7/8	1 7/8	2 5/8
PDX-TB30	PDX-30 Towel Bar	PC, MB	809	47	69	31 7/8	1 7/8	2 5/8
PDX-RH-1	PDX-Robe Hook	PC, MB	47	51	39	1 7/8	2	1 1/2
PDX-TPEURO	PDX-Tissue Holder	PC, MB	161	47	69	6 3/4	1 7/8	2 5/8
PDX-TRSQ	PDX-Towel Ring	PC, MB	205	47	69	8 1/8	1 7/8	2 5/8

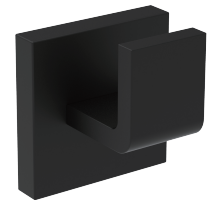
NOTE: Dimensions and specifications are subject to change without notice.



12"/18"/24"/30" Towel bar  
PDX-TB12/TB18/TB24/TB30-MB



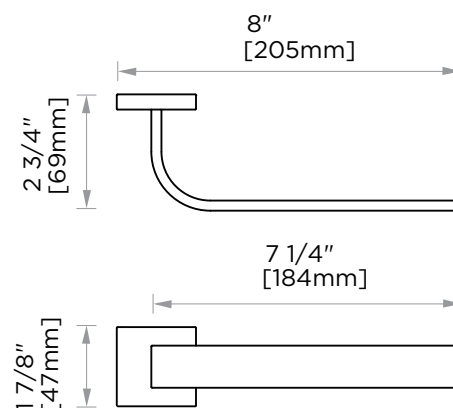
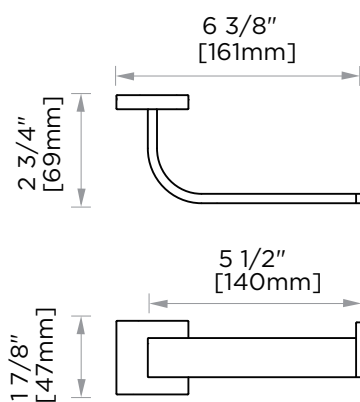
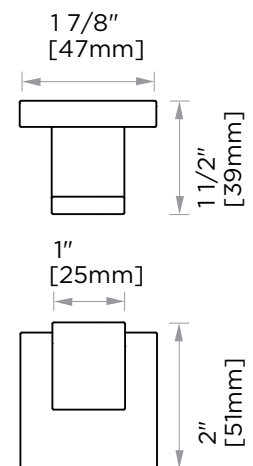
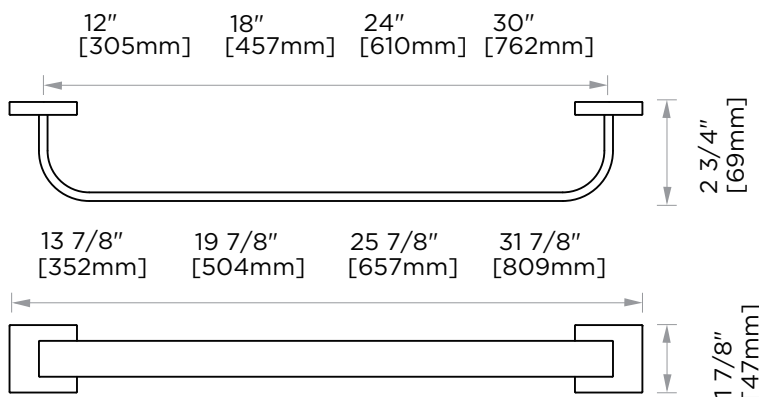
Robe Hook  
PDX-RH-1-MB



Tissue Holder  
PDX-TPEURO-MB



Towel Ring  
PDX-TRSQ-MB



NOTE: Dimensions and specifications are subject to change without notice.